



Wirtschaftstag
日独経済シンポジウム **Japan**

Contribution of Fujifilm to solve societal challenges in the “Sustainability field”

May 22, 2023

Hiroshi Tamaoki,

Senior Manager, Open Innovation Hub / Search & Development Group

FUJIFILM Europe GmbH

**NEVER
STOP**

FUJIFILM
Value from Innovation



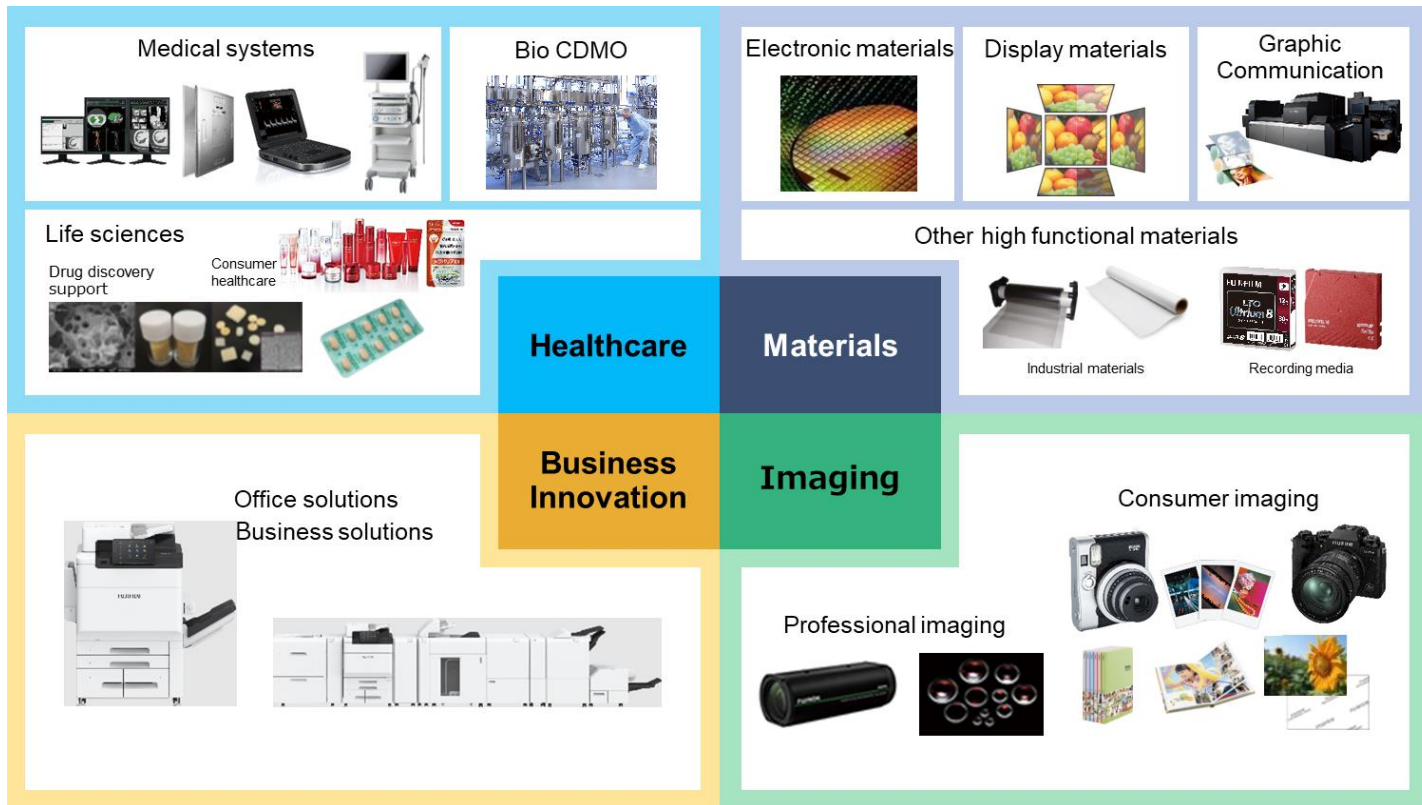
about us

Our Corporate Philosophy

We will use **leading-edge, proprietary technologies** to provide top-quality products and services that contribute to the advancement of culture, science, technology and industry, as well as improved health and environmental protection in society.

Our overarching aim is to help enhance **the quality of life of people worldwide**.

Corporate Portfolio





Contribution to solve societal issues in the “sustainable field”

Our commitment for a sustainable society

2040

We will strive to resolve social issues through our business activities and contribute to the realization of a sustainable society.

FUJIFILM

Social issues that we are focusing



ENVIRONMENT



HEALTH



DAILY LIFE



WORK STYLE

1 貧困をなくそう

2 飢餓をゼロに

3 すべての人に健康と福祉を

4 質の高い教育をみんなに

5 ジェンダー平等を実現しよう

6 安全な水とトイレを世界中に

7 エネルギーをみんなにそしてクリーンに

8 働きがいも経済成長も

9 産業と技術革新の基盤をつくろう

10 人や国の不平等をなくそう

11 住み続けられるまちづくりを

12 つかう責任

13 気候変動に具体的な対策を

14 海の豊かさを守ろう

15 陸の豊かさを守ろう


16 平和と公正をすべての人に

17 パートナーシップで目標を達成しよう

SUSTAINABLE DEVELOPMENT GOALS

2030年までに17の持続可能な開発目標を達成しよう

Resolve meaningful and difficult social issues



“Sustainability” in Environment

Fujifilm CO2 emission reduction ultimate targets

2040

①

**CO₂ emissions from manufacturing
(Scope1+2*)**

**Target: Achieve net zero CO₂ emissions in
FY2040**

(Previous target: FY2050)

**(Achieve 50% reduction compared to
FY2019 level in FY2030)**

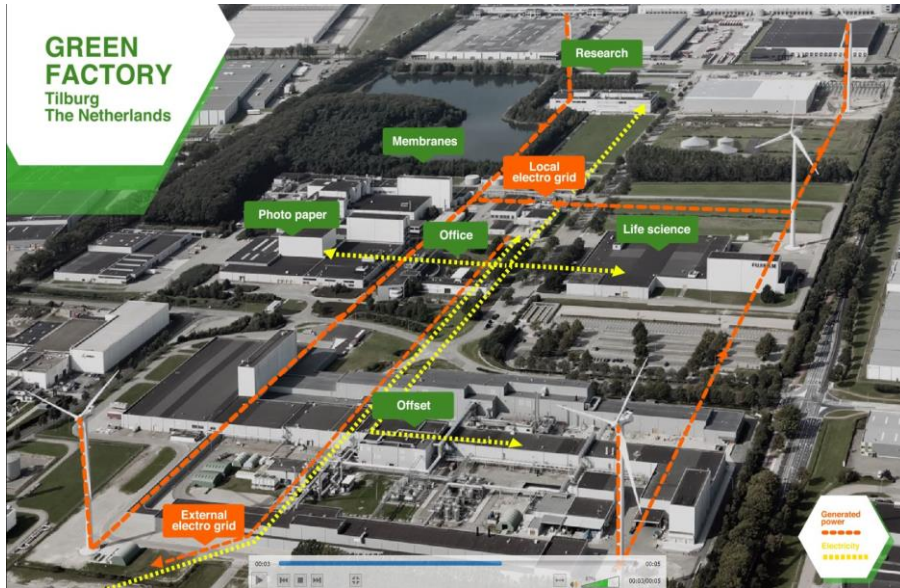
②

**Reduce CO₂ emissions across entire
product life cycle**

**Target: 50% reduction compared to
FY2019 levels by FY2030**

(Previous target: 45% reduction
compared to FY2013 levels)

100% renewable electricity Factory in the Netherlands



- The Fujifilm factory in the Netherlands use 100% renewable electricity.: **GREEN ELECTRICITY**
- The Fujifilm factory in the Netherlands has a water recycling system and uses well water and recycled water.: **REDUCE WELL WATER CONSUMPTION**
- The Fujifilm factory installed renewable electricity in FY 2003. It does constant transformation.

Scaling up H2 production technologies under contract development and manufacturing (CDMO) and/or Joint development

85 YEARS OF COATING EXPERIENCE AVAILABLE FOR YOU



ENVIRONMENT

Fujifilm are offering Fujifilm's Production Technology / Quality / Operational Excellence as a Service in the fields of High Precision Coating, Nano Crystal Dispersion Polymer synthesis and Surface Treatment to help scaling up H2 production technologies :

CONTRIBUTION TO REALIZE H2 SOCIETY

Our feature of Service is operational excellence & quality.

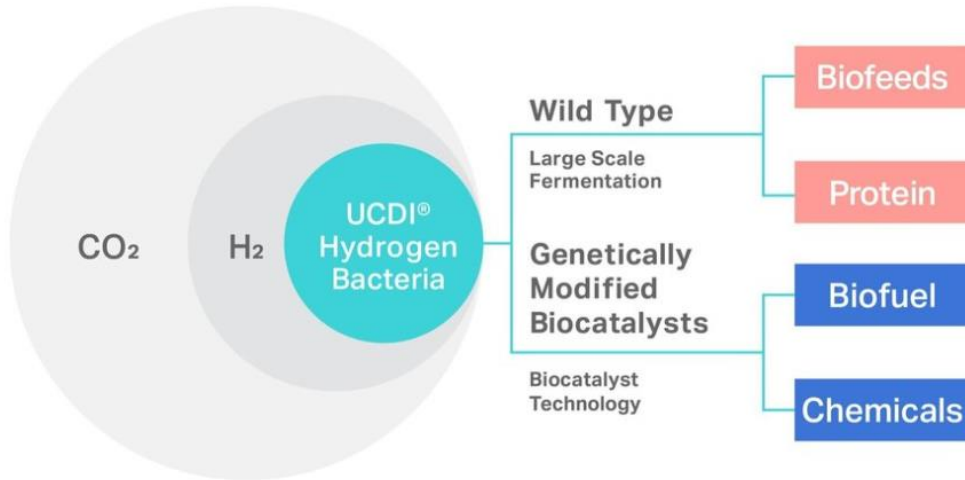
The Fujifilm factory in the Netherland use 100% renewable electricity.: **GREEN ELECTRICITY**

Utilizing CO2 as a raw material to realize new lifestyles across many fields



Utilization of
Carbon Dioxide
Institute Co., Ltd.

UCDI® TECHNOLOGY



ENVIRONMENT

FUJIFILM and the Utilisation of Carbon Dioxide Institute Co. signed a joint research agreement on December '22 to develop a technology for the mass production of hydrogen-oxidising bacteria that use carbon dioxide to produce organic matter.: **PARTNERSHIP FOR GOOD**

Through this research, the Companies will develop technology to efficiently produce alanine, a type of amino acid with mass fermentation of UCDI® Hydrogen Bacteria, unique hydrogen-oxidizing bacteria created by UCDI. **NEGATIVE CO2 EMISSION**

UCDI® Hydrogen Bacteria-producing alanine is expected to grow as it is used in a wide range of products, including food, feed, cosmetics, and cell culture media.:



Use

Examples

Reducing Carbon emission with Tape Data management Solution



Tape



- Customers can reduce energy consumption and 87% of CO2 emission as compared with a disk solution.:
ENERGY SAVING
- Customers can reduce Total cost as compared with a disk solution.
- Customers can store Data safely, because tapes on which Data are recorded are stored in a library with a physical airgap.

Aperto Lucent: Patient- and environment-centric MRI



- Designed to reduce patient anxiety and provide a comfortable examination environment: **INCLUSIVITY, HUMAN-CENTRICITY**
- No Helium, No Water: **LESS WASTE, LESS CONSUMPTION**
- Consumption Aperto Lucent: 8.600 KWh p.a. VS 136.000** KWh p.a. conventional device*, **ENERGY SAVING**

* Consumption 1.5 T:

** <https://www.nachhaltigkeit.drg.de/>



“Sustainability” in Health

Examples

Accessing to quality screening everywhere

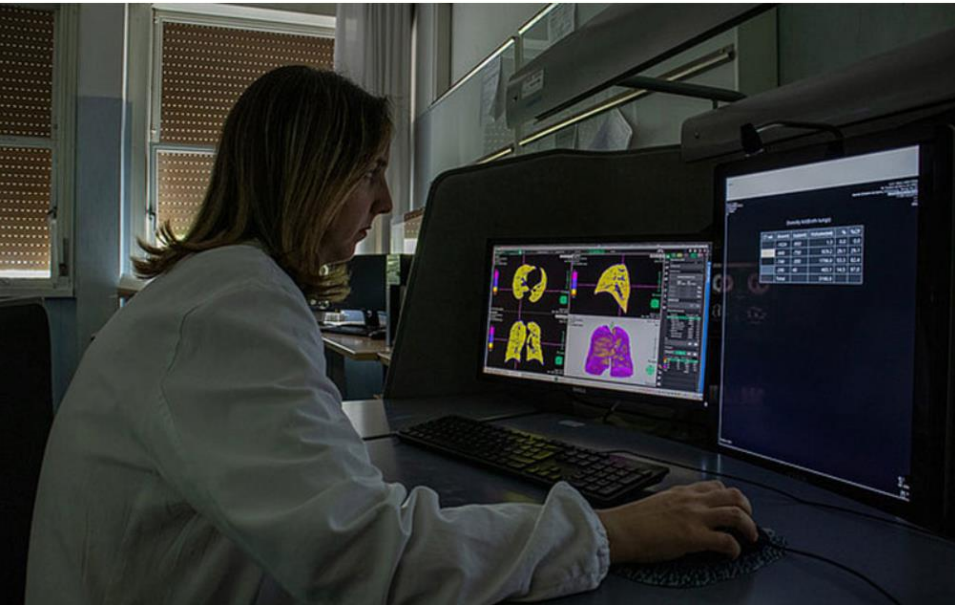
NURA
Sustained Health with Active-Ai Screening



- Opened in February 2021 in Bengaluru, India, in partnership with Dr. Kutty's Healthcare institution.: **PARTNERSHIP FOR GOOD**
- The aim is to introduce an active screening culture with the use of AI-enhanced diagnostic technologies: **HUMAN-CENTRIC HEALTHCARE**
- 100 centers scheduled to open in the future, in developing countries: **INCLUSIVITY**

Supporting the health system during the Covid-19 pandemic

The University Hospital in Pisa



A partnership was formed from the collaboration with the University Hospital of Pisa, Italy, at the peak of the pandemic in March 2020.: **PARTNERSHIP FOR GOOD**



The software 'Synapse 3D', 3D organ reconstruction, was adapted in one day to allow the rapid detection of the lung pneumonia density level and immediately manage the patient in the most appropriate way.: **HUMAN-CENTRIC HEALTHCARE**



The new 'Synapse 3D' module called 'Pisa module' supported the work of radiologists worldwide, during the pandemic.




“Sustainability” in Daily life

Examples

Conducting environmentally conscious design assessments



- Reuse of plastic waste materials in the manufacturing process: **WASTE REDUCTION**
- Reduced packaging volume (compared to our conventional model): about 50% reduction: **WASTE REDUCTION**
- Reduced the number of parts (compared to our conventional model): about 40% reduction): **RESOURCE SAVING**



Accelerate “Sustainability” through Open Innovation

Examples in European activities

Accelerate solving societal issues with external partners: Open Innovation

OI-HUBS. Global Network

● Düsseldorf, Germany

● Tokyo, Japan

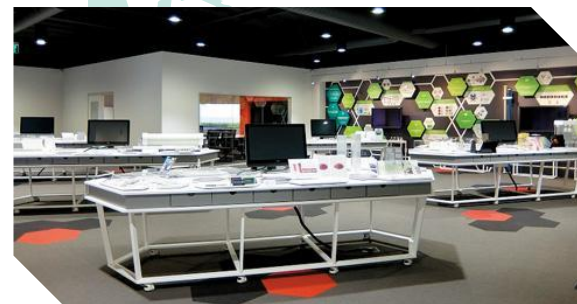
● California, U.S.



 Open Innovation Hub Europe



 Open Innovation Hub JAPAN



 Open Innovation Hub U.S.

Fusing minds and machines to progress into the future

FUJIFILM Creative Village



The FUJIFILM Creative Village, due to open in May 2023, in Tokyo, is aimed at facilitating designers and IT engineers to exert creativity and maximize performance: **PARTNERSHIP FOR THE GOOD**



The unlimited power of HUMAN CREATIVITY melds with the immense AI CAPACITY.



Based on the belief that a close partnership between the design and IT teams is essential in creating new value that contributes to solving social issues.

Our commitment for a sustainable society

2040

We will strive to resolve social issues through our business activities and contribute to the realization of a sustainable society.

FUJIFILM
Value from Innovation